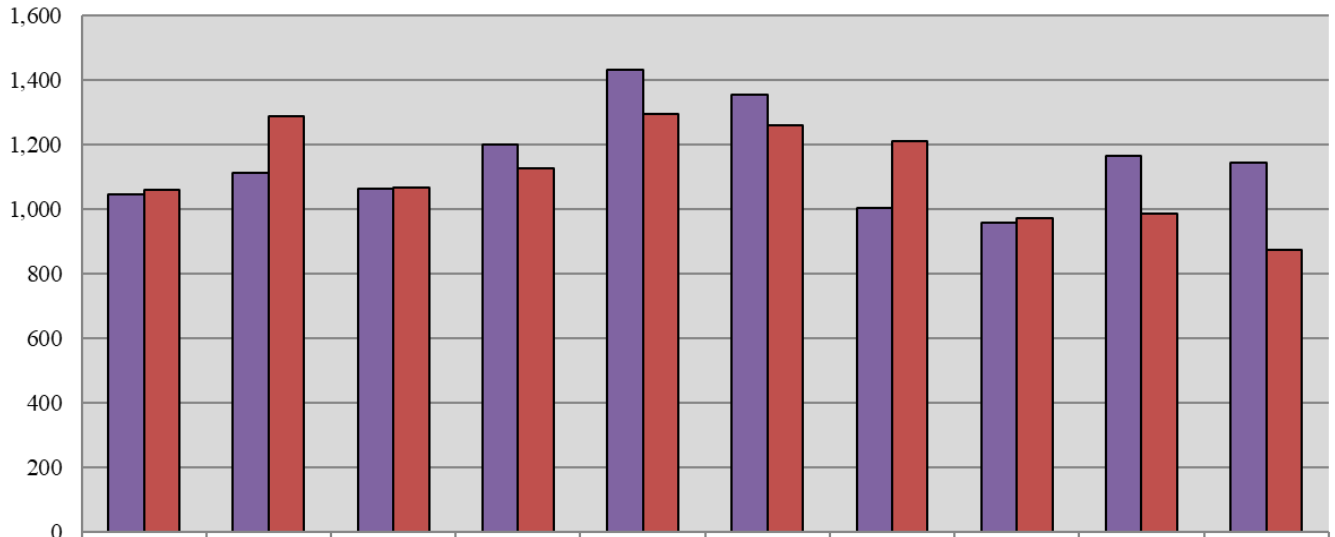


Court of Chancery 10-Year Civil Caseload Trend



	2011	2012	2013	2014	2015	2016	2017	2018	2019	2020
■ Filings	1,045	1,113	1,064	1,199	1,432	1,356	1,004	959	1,167	1,144
■ Dispositions	1,062	1,288	1,069	1,128	1,294	1,262	1,211	973	987	875

Fiscal Year